

KEY POINTS

ABOUT THE NEW EAST WING



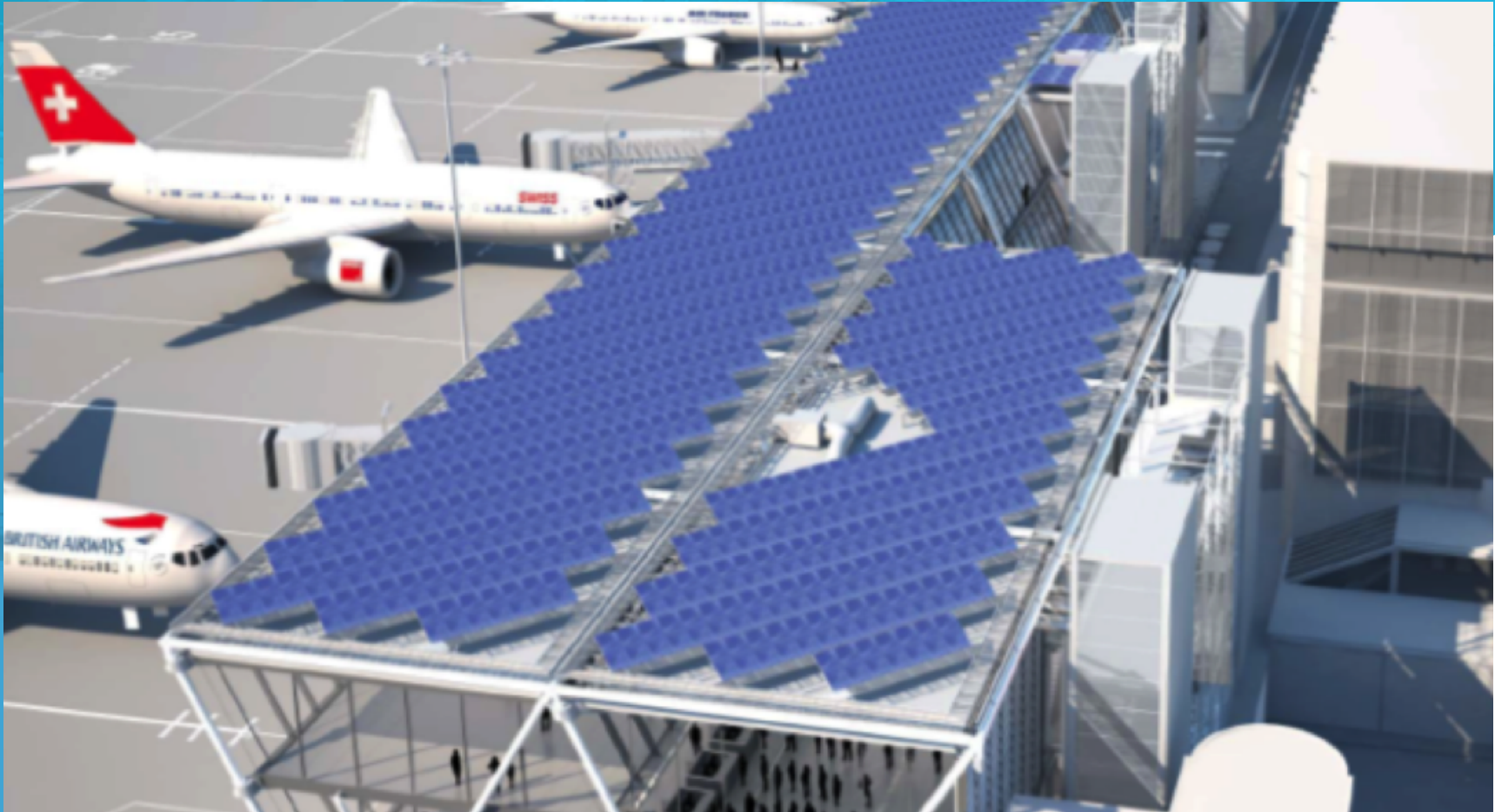
FUNCTIONS

- Replaces the airport's current wing for large aircraft, which was constructed on a temporary basis in the mid-1970s by a high-performance energy building
- Allows the upgrade of facilities
- Enhances the safety of aviation operations
- Aims to maintain and strengthen long-haul services to meet the region's economic, tourism and diplomatic needs
- Enabling Geneva to be better connected to the growth centres of the World

BUILDING

- 6 contact positions for large aircraft (compared with currently 3 contact positions and 3 non-contact remote positions)
- Dimensions: 520 metres (length), 20 metres (width), 19 metres (height)
- Cuboid – angled facades
- Metal exo-structure – glass facades
- Passenger flows above the apron
- Service road at apron height
- Customs road and technical facilities in the basement
- Photovoltaic roof

A HIGHLY EFFICIENT STRUCTURE



The East Wing concept is based on a positive-energy building, which will improve the energy balance of the airport. This objective is based on several advanced technologies:

- Electricity produced by 5,000 m² of solar panels
- More than 100 geothermal probes for heat pumps
- Glazed facades for natural light
- Additional LED lighting
- Equipment of the best energy class
- Rainwater recovery facilities
- Optimal thermal insulation through triple glazing
- Ending bus trips on the apron
- Electric power and direct heat/cooling at 3 additional positions (instead of external diesel power)